

# LEANING ON THE EVERLASTING ARMS

Handbell Ensemble

SHOWALTER  
arr. Sandra Eithun

2 Octaves  
Handbells Used: 12



Confidently ♩ = 112

LV

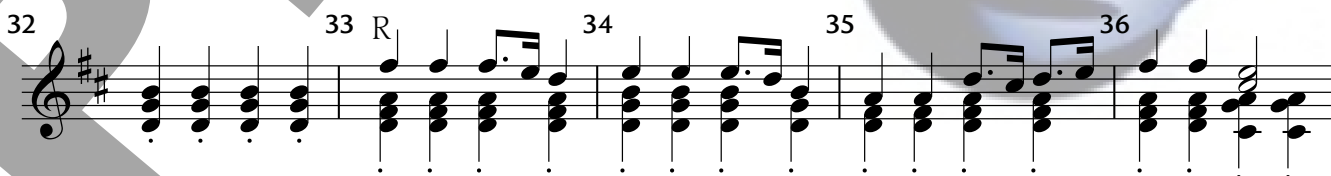
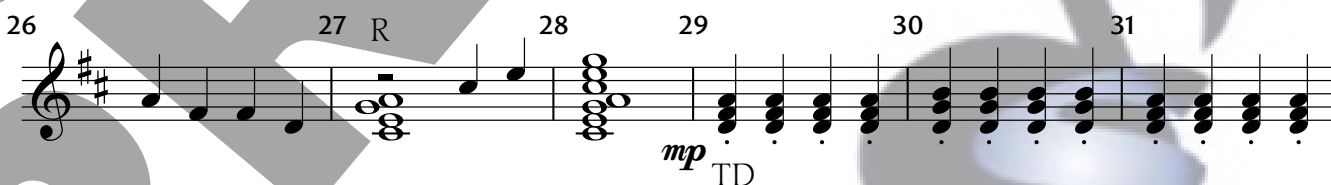
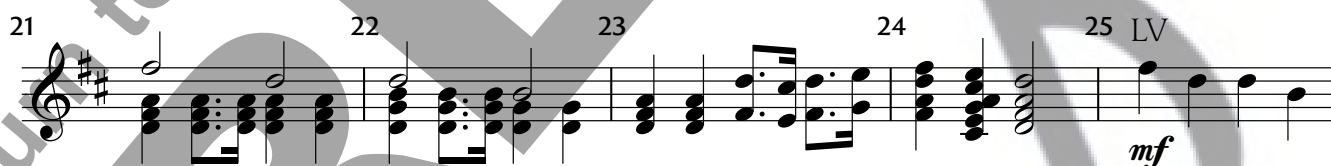
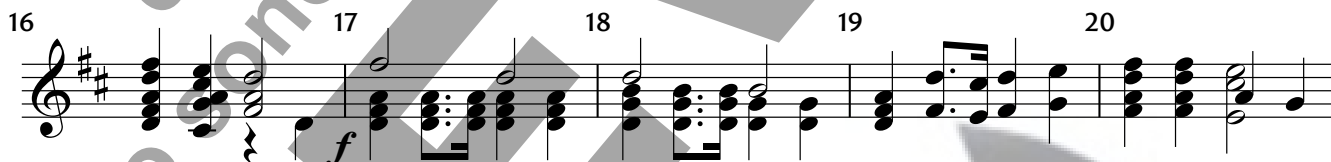
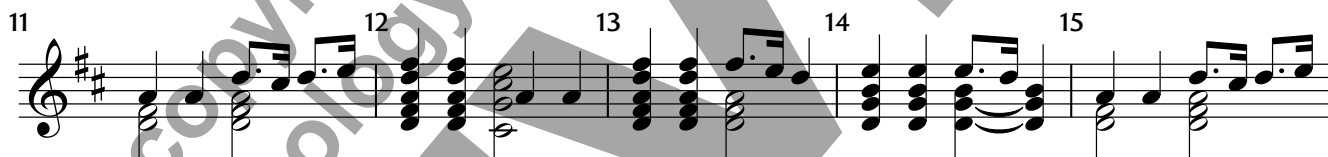
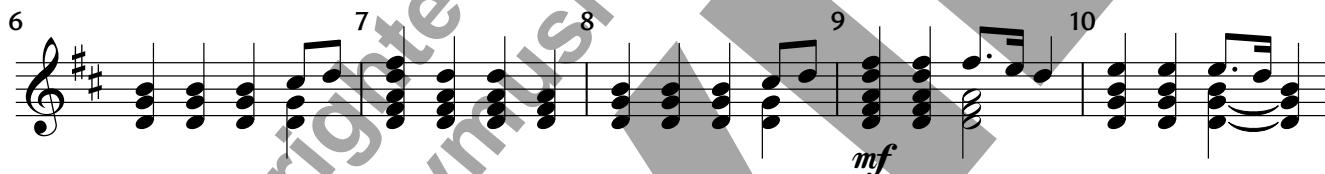
2

3

R *poco rit.*

4

5 *a tempo*



Copyright © 2007 Sonology Music DBA Solo To Ensemble Project (STEP)

Permission is granted for licensed purchaser to make 4 copies

for use in his/her own program only.

37 38 39 40 41 R *f*

42 43 44 45 46

47 48 49 LV *mf* 50 51 R *rit.* 52 *mp*

53 R LV LV LV LV LV **Slower, tenderly** ♩ = 84

54 55 56 57

58 LV LV *rit. e dim.* LV *p* R *f* **Tempo I** 61 62

63 64 65 66 67

68 69 70 71 72 RT

PERFORMANCE NOTES:

*Leaning on the Everlasting Arms* is a twelve-bell setting that your ensemble can put together with limited rehearsal time. A four measure phrase introduces each of the three verse offerings. In this phrase (as in mm. 1-4), it is very important to LV the quarter notes in the first two measures as a sort of “fanfare” into the verse. Three verses are presented, with each offering a new variation. The first verse is a straightforward arrangement; the second uses a percussive accompaniment with added thumb damps; the third begins more meditatively, with an LV section at a slightly slower tempo, wrapping up with the rousing return of the refrain.