

# Meditation for Bells

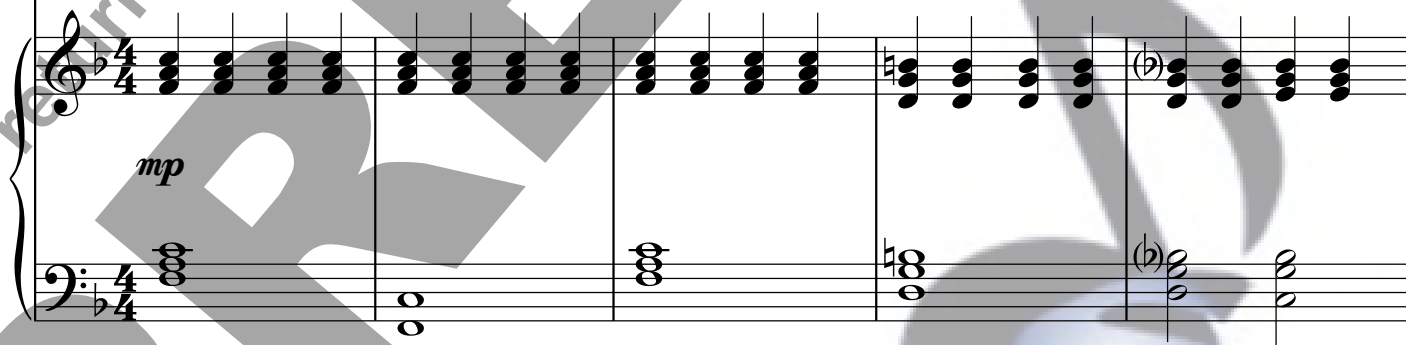
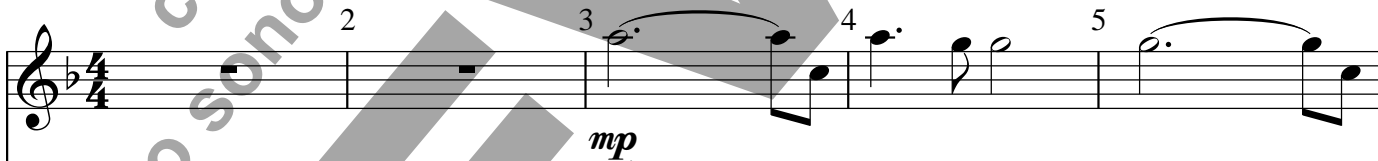
for Solo Handbells  
with Keyboard Accompaniment

Brian Childers

Handbells Used - 10



Reflectively ♩ = c.63



6 7 8 9 10

*mf*

*mf*

11 12 13 14 15

*mp*

*mp*

*poco cresc.*

16 17 18 19 20

*mf*

*mf*

21 22 23 24

*f*

*f*

25 26 27 28

29 30 31 32

33 34 35

*mp* *rit.*

*mp* *rit.*

This system contains measures 33, 34, and 35. The top staff is a single melodic line in treble clef with a key signature of one sharp (F#). Measure 33 starts with a whole rest, followed by a quarter rest, then a quarter note G4, and a dotted quarter note A4. Measure 34 begins with a half note B4, followed by a quarter note C5. Measure 35 consists of a quarter note D5, a quarter note E5, a quarter note F#5, and a quarter note G5. The bottom staff is a piano accompaniment in treble and bass clefs. It features chords in the right hand and a simple bass line in the left hand. Dynamic markings *mp* and *rit.* are placed below the staves.

36 37 38

*dim.* *p*

*dim.* *p*

This system contains measures 36, 37, and 38. The top staff is a single melodic line in treble clef with a key signature of one sharp (F#). Measure 36 has a whole rest. Measure 37 has a half note G4. Measure 38 has a whole note G4. The bottom staff is a piano accompaniment in treble and bass clefs. It features chords in the right hand and a simple bass line in the left hand. Dynamic markings *dim.* and *p* are placed below the staves.

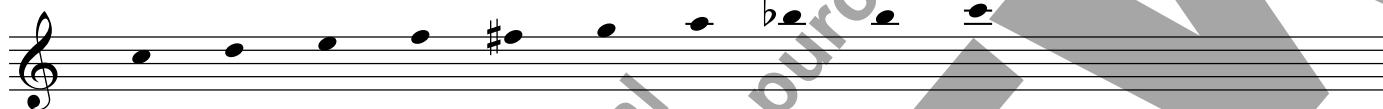
# Meditation for Bells

for Solo Handbells  
with Keyboard Accompaniment

[bell solo]

Brian Childers

Handbells Used - 10



Reflectively  $\text{♩} = \text{c.63}$

