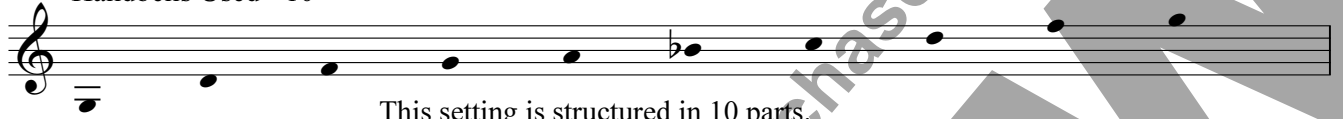


Carol of the Bells

Ensemble

Handbells Used - 10



This setting is structured in 10 parts.
Fewer than 10 ringers play two to four bells each.
More ringers double an octave higher, double the bottom two lines
an octave lower, and/or use duplicate bells.
Repeat each section as needed for processional
or other performance needs.

traditional

arr. Kevin McChesney

Add-a-Bell, repeat as needed*

*Start with any single ringer, then on repeats add ringers one, two, or more at a time until all ringers are playing.

** All LV's - don't damp on rests on repeats.

© Copyright 2010 - STEP, LLC

Permission is granted for licensed purchaser to make 9 copies
(for a total of 10) of the ensemble Carol of the Bells arr. by McChesney

5 6 7 8

LV

LV

LV

LV

LV

LV

LV

LV

LV

9 10 11 12

R

R

R

R

R

13 14 15 16

LV

LV

LV

Conclusion - Freely

17 18 19 20 21 22 23 24

R
LV
LV
LV
LV
R
R
R
R