

When Jesus Wept

arr. Nan Beth Walton

Below are suggested assignments for six ringers of unequal experience and ability. This title may be assigned in a variety of effective ways for less than six ringers, six ringers, and of course more than six ringers. Find the assignments that work best for your ringers' abilities and that allow this lovely arrangement to be played at your musical best.

ASSIGNMENTS:

- 1) A3-G4 (plus C5 in m. 19)
- 2) AB4C5
- 3) DE5 (plus C5 in m. 25 and 41) (easier)
- 4) FG5G6CD7 (easier)
- 5) AB5,6
- 6) CDEF6

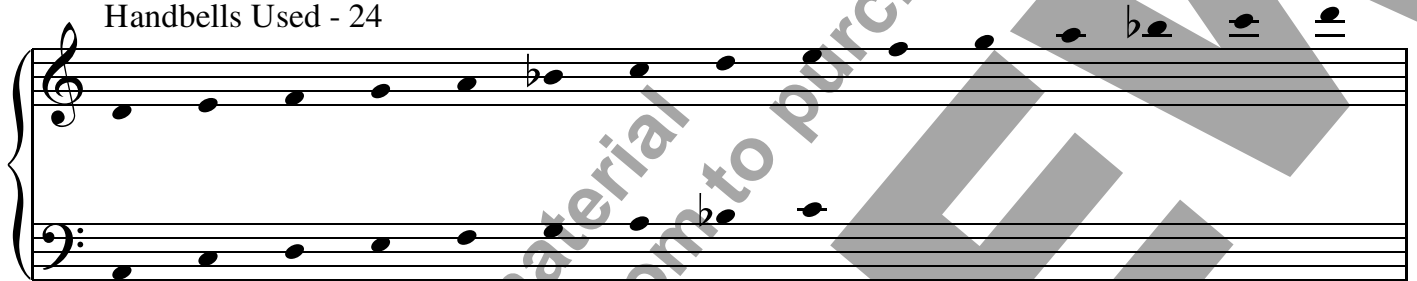
NOTE: For the best legato lines, some four-in-hand may be needed in some places. Remember, four-in-hand is a tool to be used only temporarily, not throughout the arrangement.

When Jesus Wept

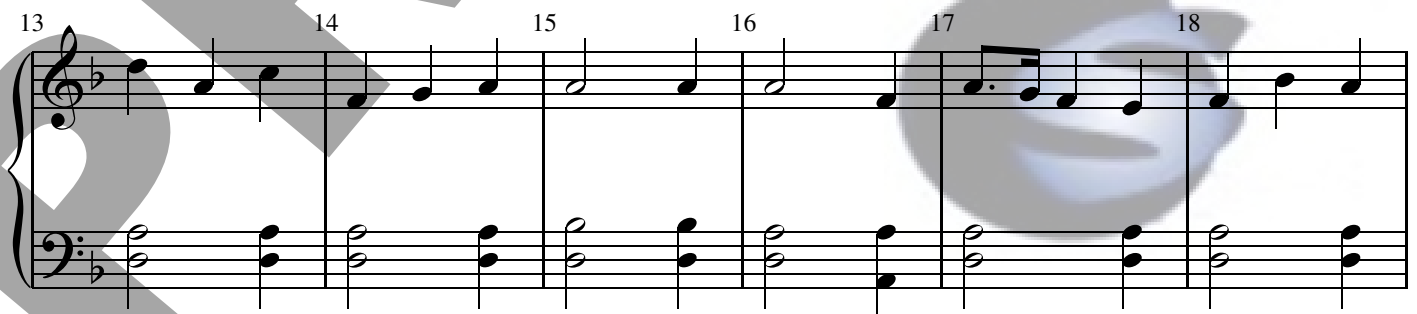
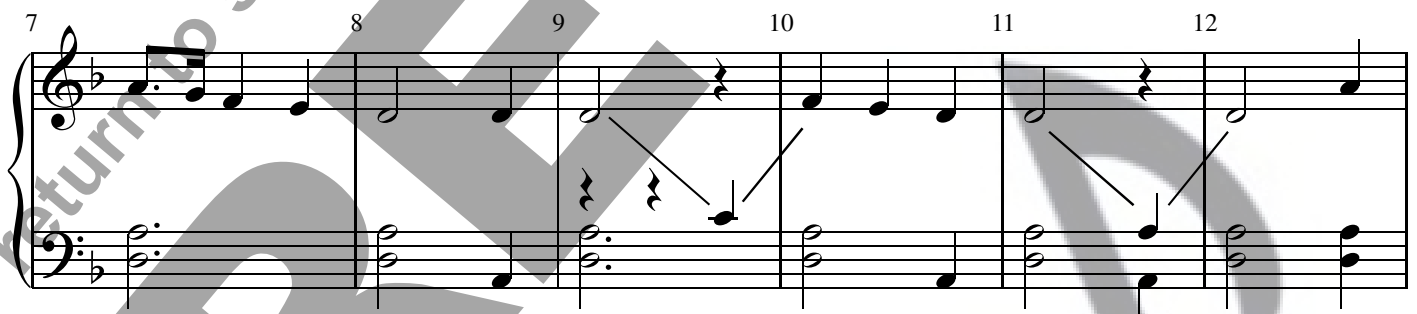
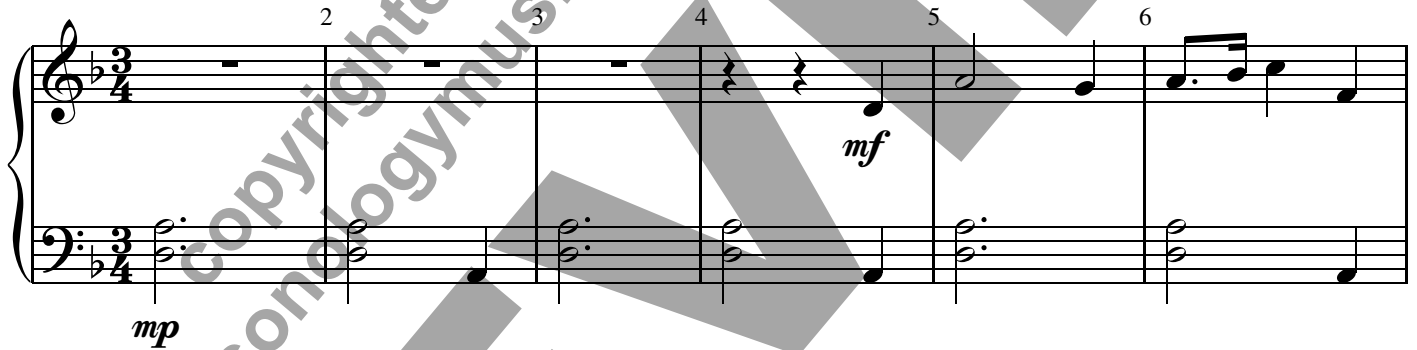
for Handbell Ensemble

William Billings
arr. Nan Beth Walton

4 Octaves
Handbells Used - 24



Smoothly, Moderato



© Copyright 2015 - STEP

Permission is granted for licensed purchaser to make 5 copies
(for a total of 6) of the ensemble When Jesus Wept arr. by Walton

Handbell Ensemble score for "When Jesus Wept" (arr. Walton), Page 2. The score is written for two staves (Treble and Bass Clef) and includes measures 19 through 41. The key signature is one flat (B-flat). The score is divided into four systems, each containing two staves. The first system (measures 19-24) includes a dynamic marking of *f* (forte) at measure 23. The second system (measures 25-30) includes a dynamic marking of *f* (forte) at measure 27. The third system (measures 31-35) and the fourth system (measures 36-41) continue the musical notation. A large, diagonal watermark reading "return to sonologymusic.com to purchase" is overlaid across the score.

42 43 44 45 46 47

48 49 50 51 52 53

54 55 56 57 58 59

mf

60 61 62 63

dim. *rit.* *p*