

The God of Abraham Praise

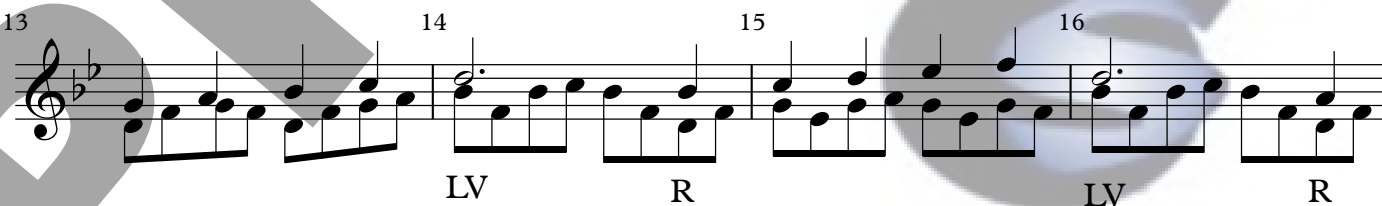
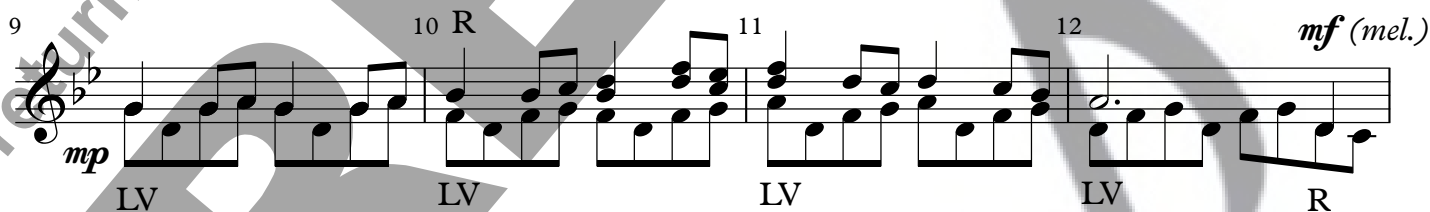
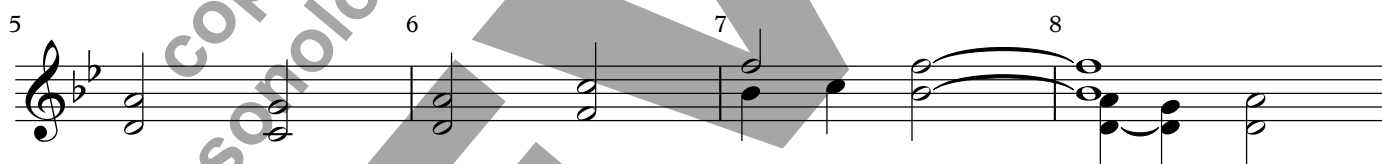
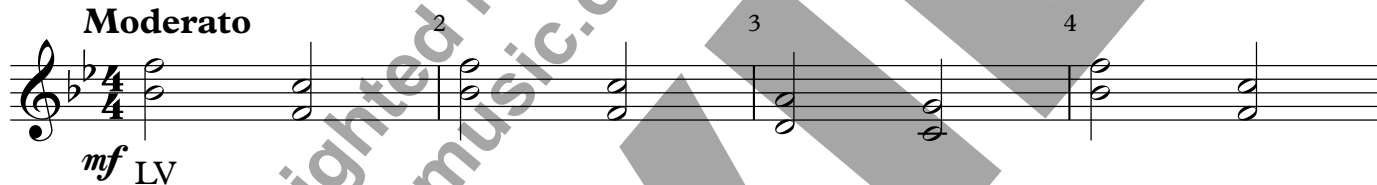
for 14 Handbells (12 Diatonic Notes)

Leoni
arr. Dillon Ekle

Handbells Used - 14



Moderato



Copyright © 2016 - STEP

Permission is granted for licensed purchaser to make 3 copies
(for a total of 4) of the ensemble The God of Abraham Praise arr. Ekle

Handbell Ensemble score, measures 17-41. The score is written in treble clef with a key signature of one flat (Bb). The music features various dynamics and articulations.

Measures 17-20: Treble clef, Bb key signature. Measures 17 and 18 are marked with a treble clef and a Bb. Measures 19 and 20 are marked with a treble clef and a Bb. Measure 20 has a double bar line.

Measures 21-24: Treble clef, Bb key signature. Measure 21 is marked with a treble clef and a Bb. Measure 22 is marked with a treble clef and a Bb. Measure 23 is marked with a treble clef and a Bb. Measure 24 is marked with a treble clef and a Bb. Measure 24 has a double bar line.

Measures 25-29: Treble clef, Bb key signature. Measure 25 is marked with a treble clef and a Bb. Measure 26 is marked with a treble clef and a Bb. Measure 27 is marked with a treble clef and a Bb. Measure 28 is marked with a treble clef and a Bb. Measure 29 is marked with a treble clef and a Bb. Measure 29 has a double bar line.

Measures 30-33: Treble clef, Bb key signature. Measure 30 is marked with a treble clef and a Bb. Measure 31 is marked with a treble clef and a Bb. Measure 32 is marked with a treble clef and a Bb. Measure 33 is marked with a treble clef and a Bb. Measure 33 has a double bar line.

Measures 34-37: Treble clef, Bb key signature. Measure 34 is marked with a treble clef and a Bb. Measure 35 is marked with a treble clef and a Bb. Measure 36 is marked with a treble clef and a Bb. Measure 37 is marked with a treble clef and a Bb. Measure 37 has a double bar line.

Measures 38-41: Treble clef, Bb key signature. Measure 38 is marked with a treble clef and a Bb. Measure 39 is marked with a treble clef and a Bb. Measure 40 is marked with a treble clef and a Bb. Measure 41 is marked with a treble clef and a Bb. Measure 41 has a double bar line.

Dynamic markings: *f* (forte) at measures 21, 38, and 41; *mp* (mezzo-piano) at measures 30 and 41; *mf* (mezzo-forte) at measure 35; *LV* (Larghetto) at measures 29 and 41.

42 43 44

LV *mf* LV R

45 46 47

LV upstems *ff* LV all

48 49 50 51

R LV *mp*

52 53 54

R LV LV LV LV

55 56 57 58

f LV (all) LV LV LV LV LV

59 60 61 62 63

LV *rit.* R