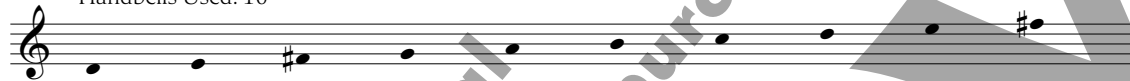


SOUTH WIND

Handbell Trio/Quartet/Quintet

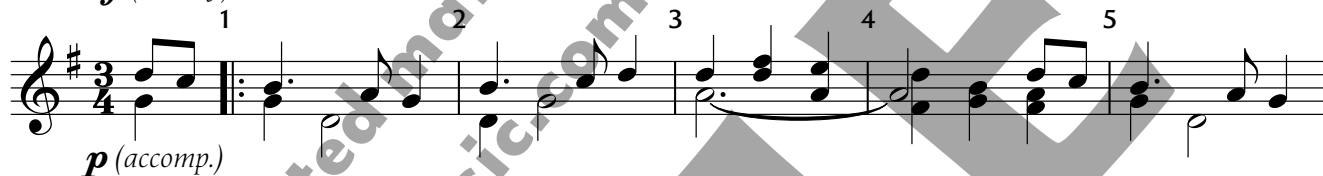
Traditional Irish
arr. Ann Habicht

2 Octaves
Handbells Used: 10

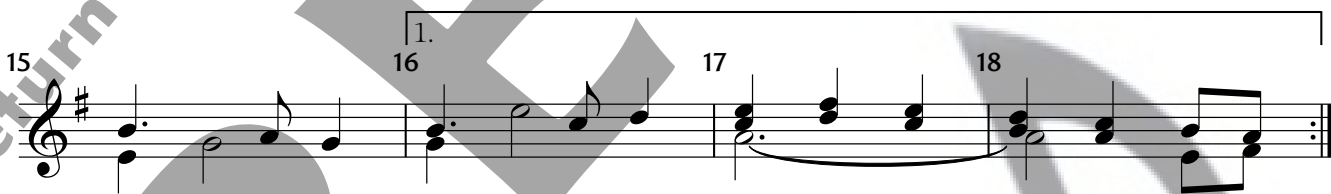


Sailing ♩ = 110

mf (melody)



p (accomp.)



Copyright © 2020 Sonology Music DBA Solo To Ensemble Project (STEP)

Permission is granted for licensed purchaser to make 5 copies

for use in his/her own program only.

SOUTH WIND

Melody Line — Bring this line out in the arrangement

The image displays a musical score for the melody line of "South Wind" in G major and 3/4 time. The score is written on a single treble clef staff and consists of 29 measures. The key signature has one sharp (F#), and the time signature is 3/4. The melody begins with a repeat sign at measure 1. Measures 7 and 9 contain first and second endings, respectively. The piece concludes with a double bar line at measure 29. A large, semi-transparent watermark reading "return to songlogmusic.com to purchase" is overlaid diagonally across the score.