

THE STAR OF COUNTY DOWN

Handbell Trio/Quartet/Quintet/Sextet

Traditional Irish
arr. Ann Habicht

3 Octaves
Handbells Used: 12

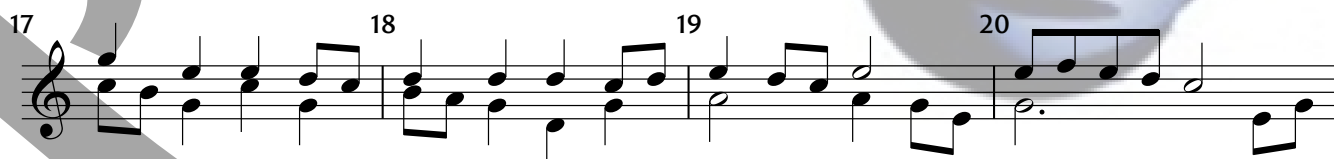
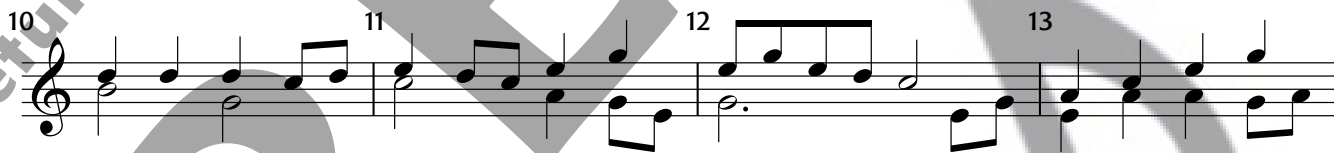
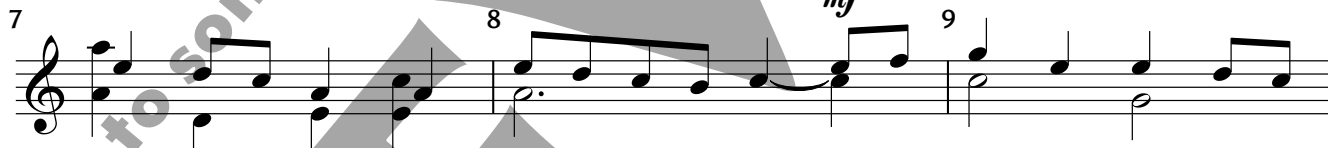


Wistful ♩ = 100

mp (melody) 1



p (accompaniment)



Copyright © 2020 Sonology Music DBA Solo To Ensemble Project (STEP)

Permission is granted for licensed purchaser to make 6 copies
for use in his/her own program only.

Musical score for Handbell Ensemble, measures 21-48. The score is written in treble clef with a common time signature. It features a melody line and a bass line. The melody line consists of eighth and quarter notes, while the bass line consists of quarter and eighth notes. The score includes dynamic markings such as *mf* (mezzo-forte) and *rit.* (ritardando). Measure numbers 21 through 48 are indicated above the staff. A large watermark is overlaid on the page, reading "return to sonologymusic.com to purchase".

21 22 23

24 25 26

27 28 *mf* 29

30 31 32

33 34 35

36 37 38

39 40 41

42 43 44 *rit.*

45 46 47 48 *ten.*

THE STAR OF COUNTY DOWN

Melody Line — Bring this line out in the arrangement

The image shows a musical score for the melody line of "The Star of County Down". The score is written on a single staff in 4/4 time, starting with a treble clef. The melody consists of 20 measures, numbered 1 through 20. The notes are as follows: Measure 1: G4, A4, B4, C5; Measure 2: B4, A4, G4, F4; Measure 3: E4, D4, C4, B3; Measure 4: A3, G3, F3, E3; Measure 5: D3, C3, B2, A2; Measure 6: G2, F2, E2, D2; Measure 7: C2, B1, A1, G1; Measure 8: F1, E1, D1, C1; Measure 9: B0, A0, G0, F0; Measure 10: E0, D0, C0, B0; Measure 11: A0, G0, F0, E0; Measure 12: D0, C0, B0, A0; Measure 13: G0, F0, E0, D0; Measure 14: C0, B0, A0, G0; Measure 15: F0, E0, D0, C0; Measure 16: B0, A0, G0, F0; Measure 17: E0, D0, C0, B0; Measure 18: A0, G0, F0, E0; Measure 19: D0, C0, B0, A0; Measure 20: G0, F0, E0, D0.

21 22 23

24 25 26

27 28 29

30 31 32

33 34 35

36 37 38

39 40 41

42 43 44

45 46 47 48