

RITMO FESTIVO

Handbell Ensemble

Kurt Meyer

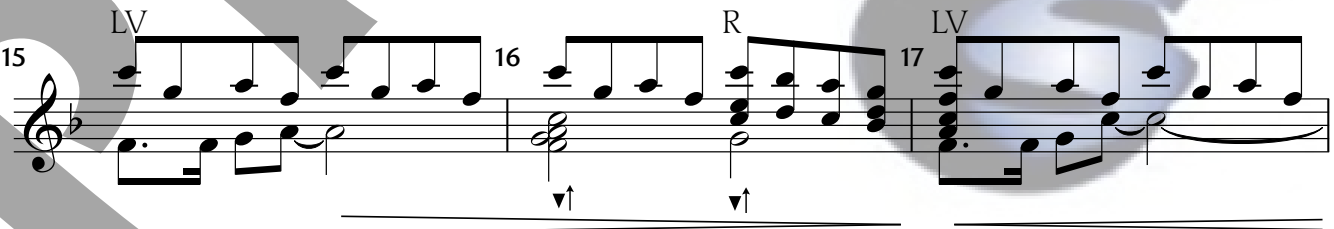
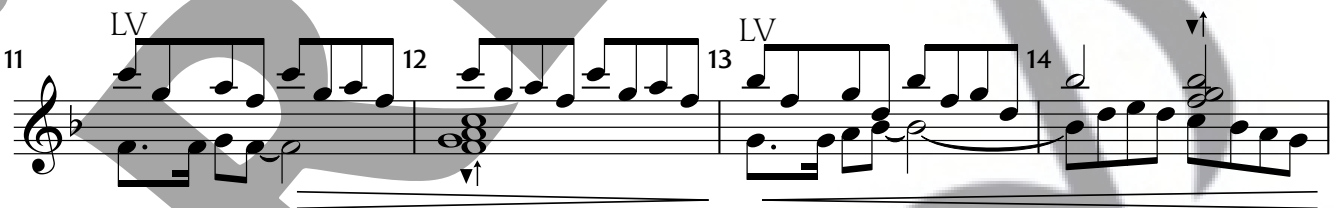
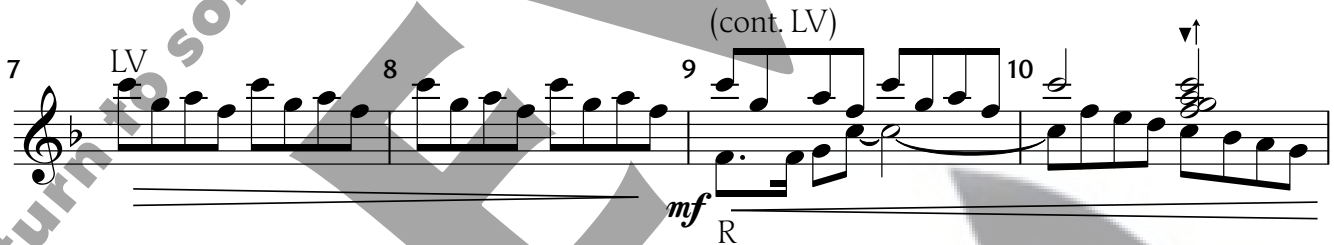
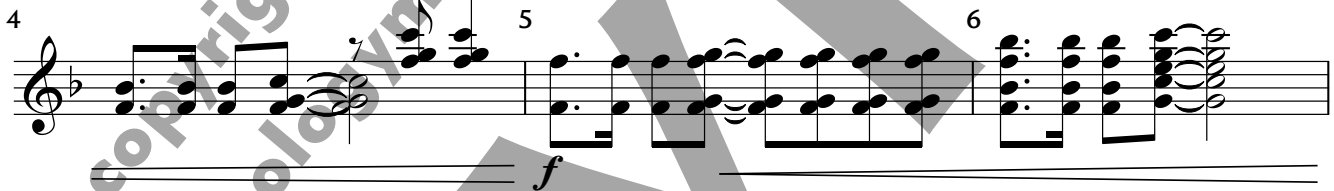
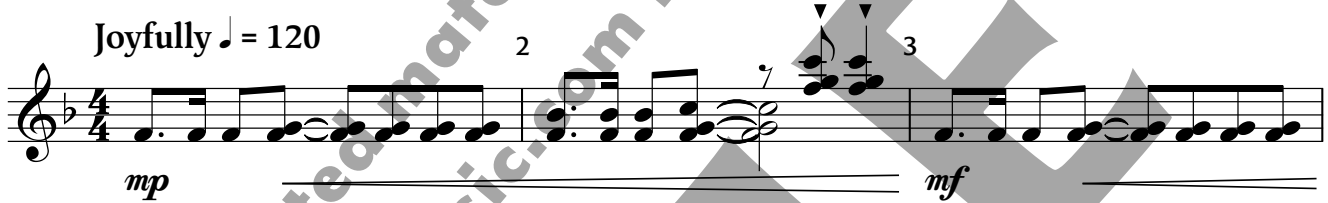
3 Octaves
Handbells Used: 12



PERFORMANCE NOTE:

In the absence of padded tables, marts and mart-lifts may be omitted.

Joyfully ♩ = 120



Copyright © 2020 Sonology Music DBA Solo To Ensemble Project (STEP)

Permission is granted for licensed purchaser to make 4 copies

for use in his/her own program only.

Musical score for Handbell Ensemble, measures 18-36. The score is written in a single treble clef staff with a key signature of one flat (Bb). The music is divided into measures 18 through 36. Measure 18 starts with a half rest followed by a quarter note G4. Measure 19 begins with a 'LV' (Left Hand) marking and contains a sequence of eighth notes. Measure 20 continues with eighth notes and ends with a quarter rest. Measure 21 starts with a 'LV' marking and contains eighth notes. Measure 22 has a quarter note G4. Measure 23 begins with a 'LV' marking and contains eighth notes. Measure 24 continues with eighth notes. Measure 25 features a 'LV (all) mp' marking and contains a series of beamed eighth notes. Measure 26 continues with beamed eighth notes. Measure 27 continues with beamed eighth notes. Measure 28 starts with a 'R' (Right Hand) marking and contains a series of beamed eighth notes. Measure 29 begins with a 'LV' marking and contains eighth notes. Measure 30 continues with eighth notes and ends with a quarter rest. Measure 31 starts with a 'LV' marking and contains eighth notes. Measure 32 continues with eighth notes. Measure 33 begins with a 'LV' marking and contains eighth notes. Measure 34 starts with a 'R' marking and contains eighth notes. Measure 35 continues with eighth notes. Measure 36 begins with a 'LV' marking and contains eighth notes. The score includes various dynamics such as *mp* and *mf*, and articulation marks like accents and slurs. A large watermark 'Return to SonologyMusic.com to purchase' is overlaid diagonally across the page.

Musical score for Handbell Ensemble, measures 37-56. The score is written in a single system with a treble clef and a key signature of one flat (B-flat). The music is divided into measures 37-38, 39-40, 41-42, 43-45, 46-48, 49-51, and 52-56. The notation includes various rhythmic values, slurs, and dynamic markings. The score is divided into two systems of staves, with the right hand (R) and left hand (LV) parts clearly indicated. A large watermark 'Return to Sonology Music.com for purchase' is overlaid diagonally across the page.

Measures 37-38: LV, R, 38

Measures 39-40: LV, R, LV

Measures 41-42: LV, R, LV

Measures 43-45: LV, R, LV, LV (all) *mp*

Measures 46-48: LV, LV, R

Measures 49-51: *mf*, *f*

Measures 52-56: 52, 53, 54, 55 Sk, 56 RT, *ff*