

THE ANGEL GABRIEL

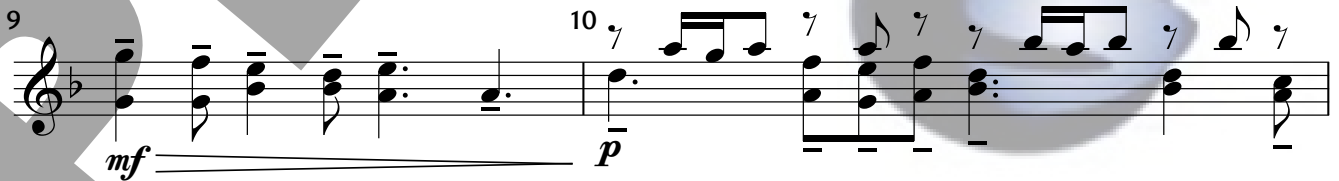
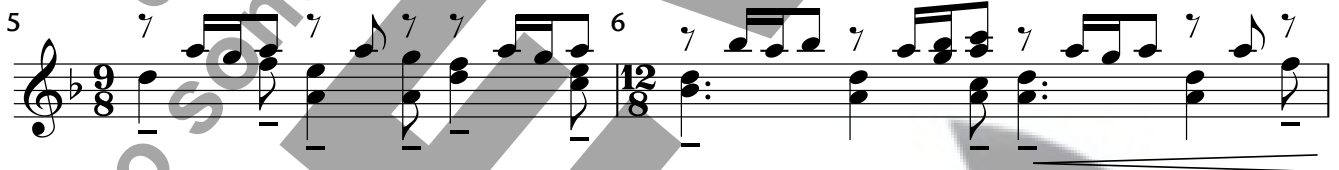
Handbell Ensemble

GABRIEL'S MESSAGE
arr. Dillon Ekle

3 Octaves
Handbells Used: 12



$\text{♩} = 72$



Copyright © 2021 Sonology Music DBA Solo To Ensemble Project (STEP)

Permission is granted for licensed purchaser to make 4 copies

for use in his/her own program only.

Musical score for Handbell Ensemble, measures 11-24. The score is written in treble clef with a key signature of one flat (Bb). The time signature is 12/8. The music features a melody in the upper voice and a bass line in the lower voice. Dynamics include *mp*, *mf*, and *f*. Handbell positions are indicated by 'LV' (Left Voice) and 'R' (Right Voice). Measure 11 starts with a *mp* dynamic. Measure 15 has a *mf* dynamic. Measure 17 has a *f* dynamic. Measure 19 has a *mp* dynamic. Measure 23 has a *f* dynamic. The score ends with a double bar line and a repeat sign.

25 26

27 28

29 30

31 32

33 34

35 36

37 38 39

rit. *a tempo* *molto rit.*

mf dim. *LV* *p*